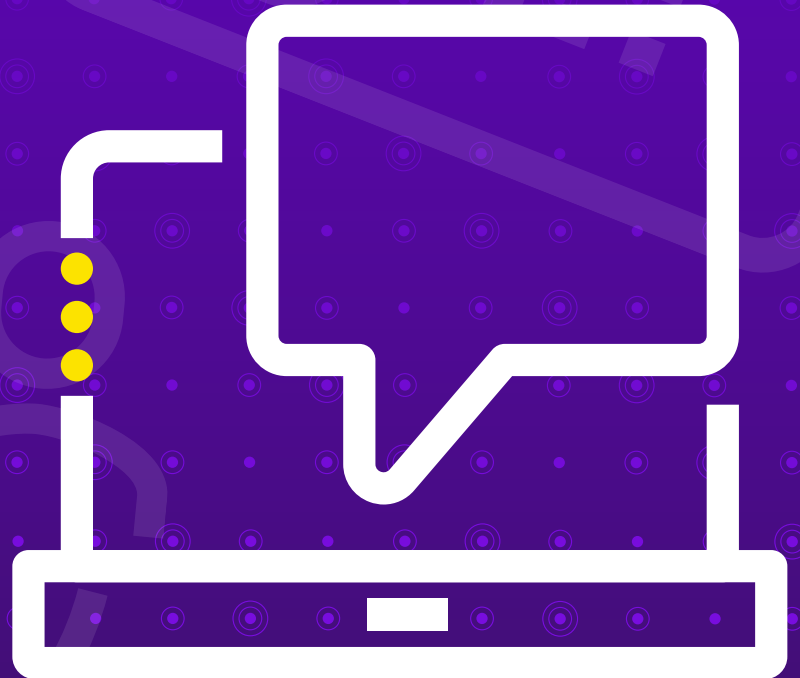
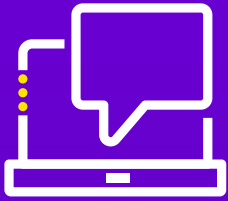




# Horizon

Hardware





# Horizon

## Hardware

Today's contact centre and working professionals expect a lot from their audio visual equipment.

They require outstanding sound performance for natural, conversational communication, extreme durability to withstand the toughest business environments and exceptional comfort for long hours of use whether they are office based, remote working or always on the move.

High quality voice is an imperative part of any company's communication strategy, combining Horizon's voice capabilities with the right headsets for your business and your employees ensures that you will always stay connected.

At Gamma we're able to offer a full range of audio equipment; Portable headsets perfect for workers on the move, desk phones perfect for office workers and those permanently home based, and audio-conferencing units perfect for meeting rooms and anyone who requires uncompromised audio quality.



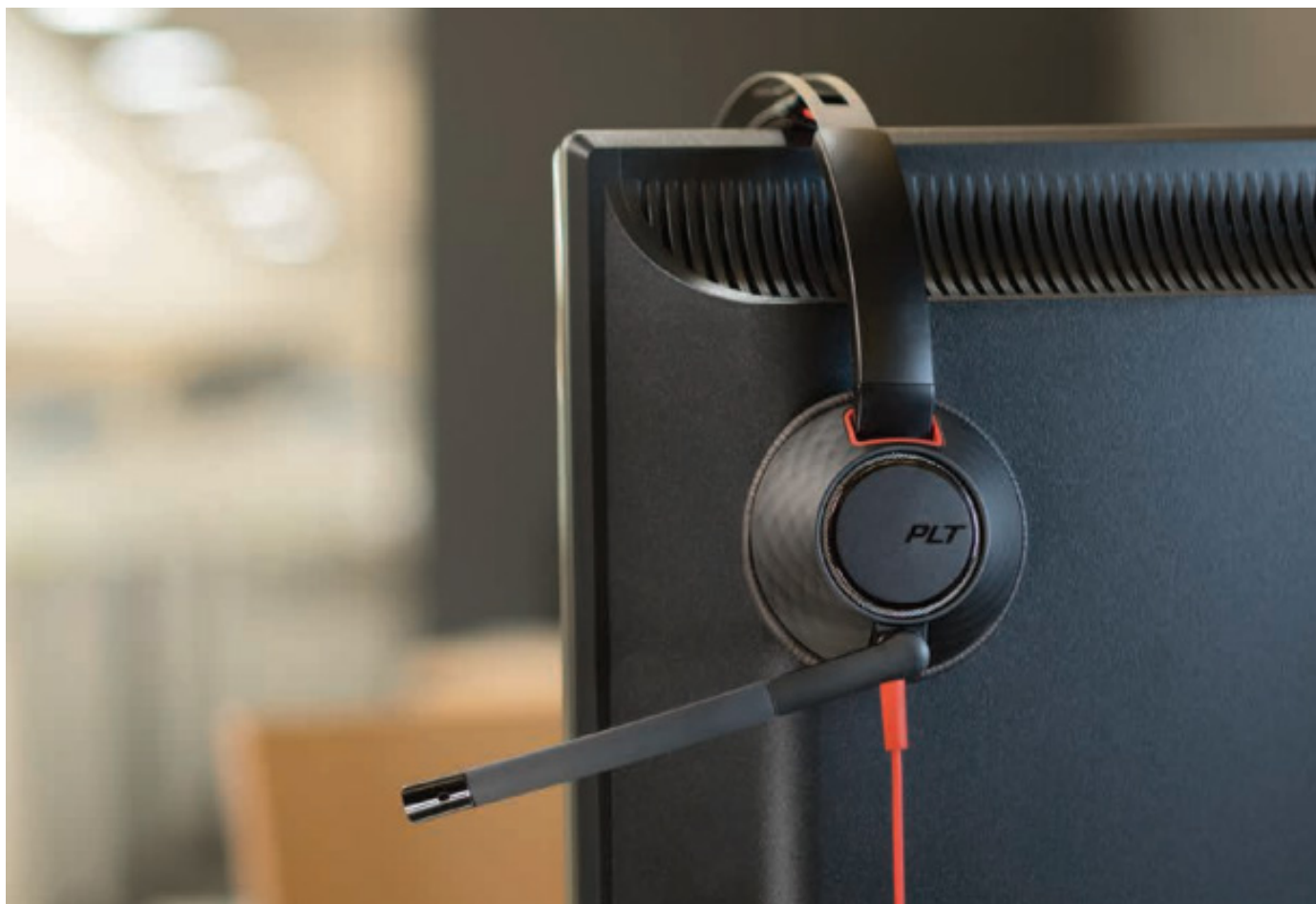


# Headsets

Headsets represent the pinnacle of portability, naturally making them perfect for workers who are on the move, or office workers who don't necessarily need the full range of features that come from a static desk phone.

We have partnered with both EPOS Sennheiser and Poly to provide you with as wide a choice of headsets as possible.





## Blackwire 5200 USB

USB headset with  
all day comfort  
in mind

Connects to



- Noise cancelling microphone to filter out ambient noise
- One touch call answer/end, volume +/- and mute
- Cushioned metal headband provides durability while maintaining a comfortable, secure fit
- Ideal for long conference calls and listening to multimedia
- Connectivity to smartphone and tablet via 3.5mm jack
- Perfect for call centre workers







## Headsets



### VOYAGER 5200 UC

#### Bluetooth headset system

- Four adaptive microphones and proprietary DSP reduce background noise
- Six layers of WindSmart® technology ensures you are heard clearly
- Portable charging case provides up to 14 hours of additional talk time
- Perfect for busy executives



Connects to



### SAVI® 8220



#### Wireless DECT™ headset system

- Roam up to 590 ft/180 m from your PC
- Close Conversation Limiting blocks background noise and nearby conversations
- Active noise cancelling filters out noise so you can focus
- Up to 13 hours of talk time on a single charge
- Perfect for sales staff and remote workers

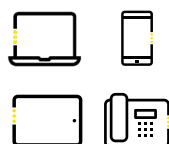
Connects to



### VOYAGER 8200 UC



Connects to

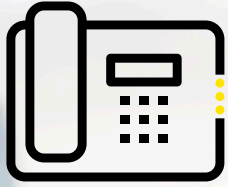


#### Stereo Bluetooth headset with active noise canceling (ANC)

- Dual-mode active noise canceling (ANC) lets you choose your preferred noise-reduction level
- Contemporary, boomless design
- Four adaptive microphones reduce background noise
- Hi-fi stereo sound
- Perfect for busy executives







# Handsets

Ubiquitous with any modern office, IP desk phones are easy to set up, easy to use, and optimised to run on most emerging IP and UC Cloud platforms.

They also pack excellent sound quality and propriety technologies that others can't match.

We offer a range of desk phones from Poly, Cisco and Yealink to ensure that you get the equipment your workforce needs.







## Handsets



### VVX250



A four line, Wi-Fi enabled basic IP desk phone with colour display

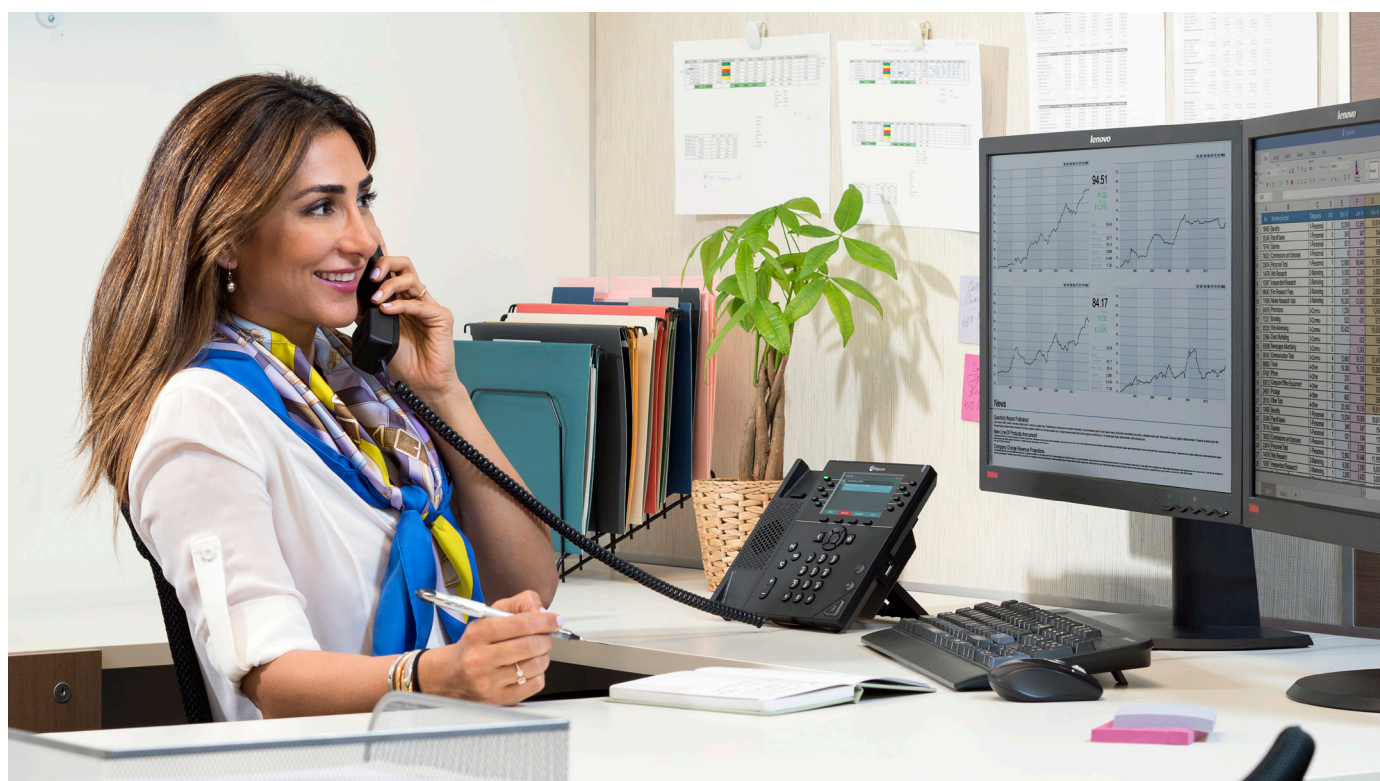
- Fixed feature keys - speaker, mute, headset volume
- 2 programmable keys
- Power over Ethernet - 2 x 10/100/1000
- USB ports - 1 x USB 2.0
- Perfect for small and medium sized businesses

### VVX450



A twelve line, performance IP desk phone with colour display

- Fixed feature keys - speaker, mute, headset volume
- 10 programmable keys
- Power over Ethernet - 2 x 10/10/1000
- Expansion modules - 1 Polycom VVX EM50
- USB ports - 2 x USB 2.0
- Perfect for knowledge workers at businesses of all sizes





## Edge E100



A 2-line handset that offers essential features for efficient office communication.

- 2.8" colour display for clear visibility
- 2 x Gigabit Ethernet PoE ports for high-speed network access and 1 x USB-C port for easy peripheral connectivity
- Perfect for home offices or shared spaces, providing robust performance at an entry-level price

## Edge E550



A 12-line handset ideal for businesses looking to optimise their communication efficiency.

- 5" colour display for easy navigation and information management
- 2 x Gigabit Ethernet PoE ports for reliable and fast network connectivity, and 2 x USB-C ports for versatile peripheral support
- Built-in Bluetooth and Wi-Fi, providing seamless wireless headset integration and network access
- Expand your device's capabilities with an optional module, making it adaptable to your growing business needs
- Perfect for small to medium-sized businesses or remote workers who require a feature-rich, scalable communication device





## W73P DECT Handset and Base Station



Allows you to enjoy superb mobility and efficient flexibility immediately as well as significantly eliminating additional wiring troubles and charges

Featuring more functions, lines and mobility, it supports up to 10 SIP accounts and 20 simultaneous calls.

- Fixed feature keys - 5 navigation keys, 2 softkeys, 6 function keys, 6 shortcut keys
- 35 hours talk time; 400 hours standby time
- Power over Ethernet - IEEE 802.3af (Class 1)
- Perfect for both small and medium businesses

*Including a W70B base station and 1 W73H handset*

## W59R Ruggedised DECT Handset

This handset can be relied upon in harsh working environments. It is dust, shock and water resistant with a tough rubberised surface to protect the handset from slipping, scratching and bacteria.

- Ruggedised and robust
- Up to 360 hours of standby time
- Up to 28 hours of talk time
- Perfect for factories, constructions sites and warehouses

*To be used with W70B base station (included as part of the W73P bundle)*



## Yealink T46U



A powerful assistant for modern business. Greatly improves call experience and work efficiency with colour screen, Ultra HD sound quality, faster response speed, and even more advanced features.

- 7 feature keys: message, headset, hold, mute, transfer, redial, hands-free speakerphone; 10 programmable keys
- Power over Ethernet - Gigabit Ethernet (10/100/1000) switch
- Optional expansion module EXP43
- USB ports - 2 x USB 2.0
- Perfect for knowledge workers at businesses of all sizes

## Colour-screen Expansion Module EXP43

The 4.3-inch colour screen expansion module is designed to offer advanced call handling capabilities with its simplified UI and up to 60 programmable keys for various features.

*For use with Yealink T46U*





## Handsets



### Cisco 8841



An easy to use 10-line IP phone with a colour display and 8 programmable line keys and up to 12 programmable soft keys

- Fixed feature keys - voicemail, directory, hold, transfer, conference, settings, volume, headset, speaker, mute, back, end call
- 8 Programmable keys
- Power over Ethernet - Gigabit Ethernet (10/100/1000) switch
- Perfect for small and medium businesses

### Cisco 6851



A reliable, business-grade audio phone with Gigabit Ethernet integration and low power usage

- Fixed feature keys - voicemail, directory, hold, transfer, conference, settings, volume, headset, speaker, mute, back, end call
- 8 Programmable keys
- Power over Ethernet - Gigabit Ethernet (10/100/1000) switch
- Perfect for small businesses looking to upgrade their phone system from traditional analogue







## Handsets



### Cisco 8851

A 10-line, business grade IP telephone with colour display and integrated Bluetooth technology



- Fixed feature keys - voicemail, directory, hold, transfer, conference, settings, volume, headset, speaker, mute, back, end call
- 8 programmable line keys and up to 12 programmable soft keys
- Power over Ethernet - Gigabit Ethernet (10/100/1000) switch
- Expansion modules - 2K KEM, Power supply: 2 KEM, PoE 1 KEM, PoE+ 2 KEM
- USB ports - 1 x USB 2.0
- Perfect for knowledge workers at businesses of all sizes

### Cisco 8861

A 10-line, business grade, wi-fi enabled IP telephone with colour display and integrated Bluetooth technology

Offers highly secure VoIP communications and integration with your personal mobile device.



- Fixed feature keys - voicemail, directory, hold, transfer, conference, settings, volume, headset, speaker, mute, back, end call
- 8 programmable line keys and up to 12 programmable soft keys
- Power over Ethernet - Gigabit Ethernet (10/100/1000) switch
- Expansion modules - 3 KEM, Power supply: 3 KEM, PoE 0 KEM, PoE+ 3 KEM
- USB ports - 2 x USB 2.0
- Perfect for knowledge workers at businesses of all sizes

### Cisco ATA 192

The Cisco ATA 192 is an Analogue Telephone Adapter (ATA) that allows you to plug in an analogue phone into the Horizon service. The ATA 192 will come configured correctly for your setup.





# Audio & Video Conferencing

In a world where conference calls are on the rise, crystal-clear conversations are a must for productive meetings.

Gamma has partnered with Polycom and Cisco to deliver conference phones with superb voice quality, expansive microphone pick-up, advanced audio processing, and all the features that make conference calls seem as natural as being in the same room.



## Cisco 7832

Easy-to-use, secure VoIP conference phone that you can deploy on premises or in the cloud. Ideal for small conference rooms and private office desktops. Increase business call efficiency and collaboration with cost-effective audio conferencing.

- Single line with a user experience of multiple calls per line
- 4 programmable softkeys
- Power over Ethernet - 10/100 (Class 2) requiring no standalone power supply





## Polycom Trio 8500

Taking the ordinary conference call experience to the next level

Getting conference calls started shouldn't be hard, frustrating or time-consuming. The sleek and sophisticated design makes navigation simpler than ever to use. And with Polycom's legendary voice quality, you can be sure every syllable is crystal clear with Polycom® HD Voice™ technology.

- Up to three lines
- Connectivity - Wi-fi and Bluetooth enabled
- Power over Ethernet - Gigabit Ethernet (10/100/1000) switch
- USB ports - 1 x USB 2.0 Type A-compliant host port USB battery charging BC1.2 compliant; 1 x USB 2.0 Micro-B device port



## Polycom Trio 8800



**Polycom Trio is the smartphone for modern conference rooms.**

Marrying Poly's legendary voice quality with powerful content performance, Polycom Trio can easily transform conference rooms of all sizes into collaborative, hassle-free team environments.

- Up to three lines
- Connectivity - Wi-fi and Bluetooth enabled
- Power over Ethernet - Two port Gigabit Ethernet (10/100/1000) switch; 2nd port supports IEEE 802.3af PSE
- USB ports - 1 x USB 2.0 Type A-compliant host port USB battery charging BC1.2 compliant; 1 x USB 2.0 Micro-B device port

## Polycom Studio Bar



The Polycom Studio USB video bar is a high-quality camera and speakerphone system that integrates with Horizon Collaborate and includes key features such as an auto-framing camera, stereo microphones, and stereo speakers.

- Camera with privacy shutter that enables or disables the video input as you choose
- Connectivity - Wi-fi and Bluetooth enabled
- USB ports - 1 x USB 3.0 Type C port (with 2.0 compatibility)



# Accessibility

In selecting our partners and our Horizon compatible hardware we recognise that there are people who have a varied range of abilities. Many of our products have features that require no configurations such as:

- Visual alerts
- Customizable backlighting
- Hearing-aid compatibility
- Tactile “5” key with raised “bumps”

As well as this we have further features to support those who are visually, hearing or mobility impaired. Below is a list of supported features - for full details, including which hardware best suits your accessibility needs, please contact your Business Development Manager.



## Accessibility features for hearing impaired users

- Visual message waiting indicator
- Adjustable ringtone and volume
- Adjustable call volume
- Visual Ringing
- Electronic hookswitch support
- Headset memory mode
- Hearing aid compatible handsets
- TTY support



## Accessibility features for vision impaired and blind users

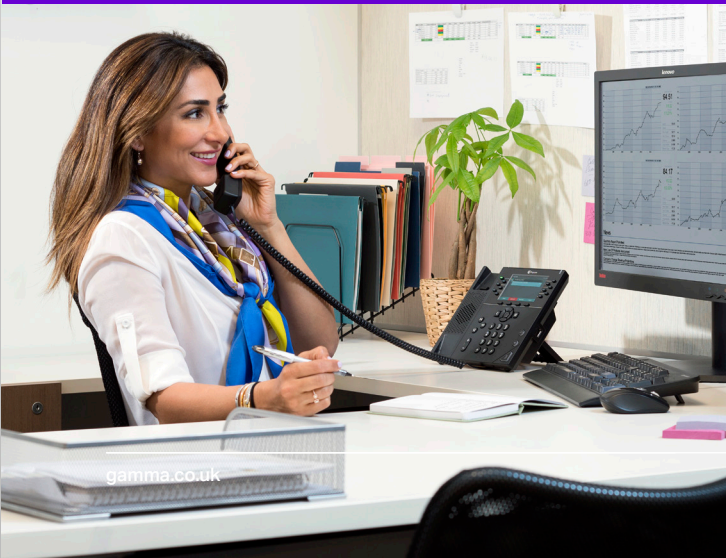
- Adjustable backlight settings
- Tactile “5” key with raised bumps
- Large keys
- Physical line keys
- Variety of feature keys that you can press
- Tactile-discernible number, feature, and navigation keys
- Illuminated feature keys



## Accessibility features for mobility impaired users

- Auto-answer feature
- Dedicated handset jack that enables auto-answer function
- Touchscreen
- Large keys
- Built-in speakerphone
- Adjustable phone stand
- “Polycom Desktop Connector” application (VVX models)









**Tel:** 01223 455655  
**Email:** [info@cbsl.uk.com](mailto:info@cbsl.uk.com)  
**Add:** Wisbech Burwell Cambridge  
**Web:** [www.cumulusbusiness.co.uk](http://www.cumulusbusiness.co.uk)



We're a certified Carbon Neutral\* Company. This means you can demonstrate green credentials yourself. By working with us you have a solution that not only helps the environment but also enables you to become greener and conform to new Government environmental policies.